

SEAL



AS BUILT 09/27/2021

SCALE



NO.	DESCRIPTION	DATE

REVISIONS

DRAWN BY	LMD
APPROVED BY	ANB
CHECKED BY	ANB
DATE	JULY 2020

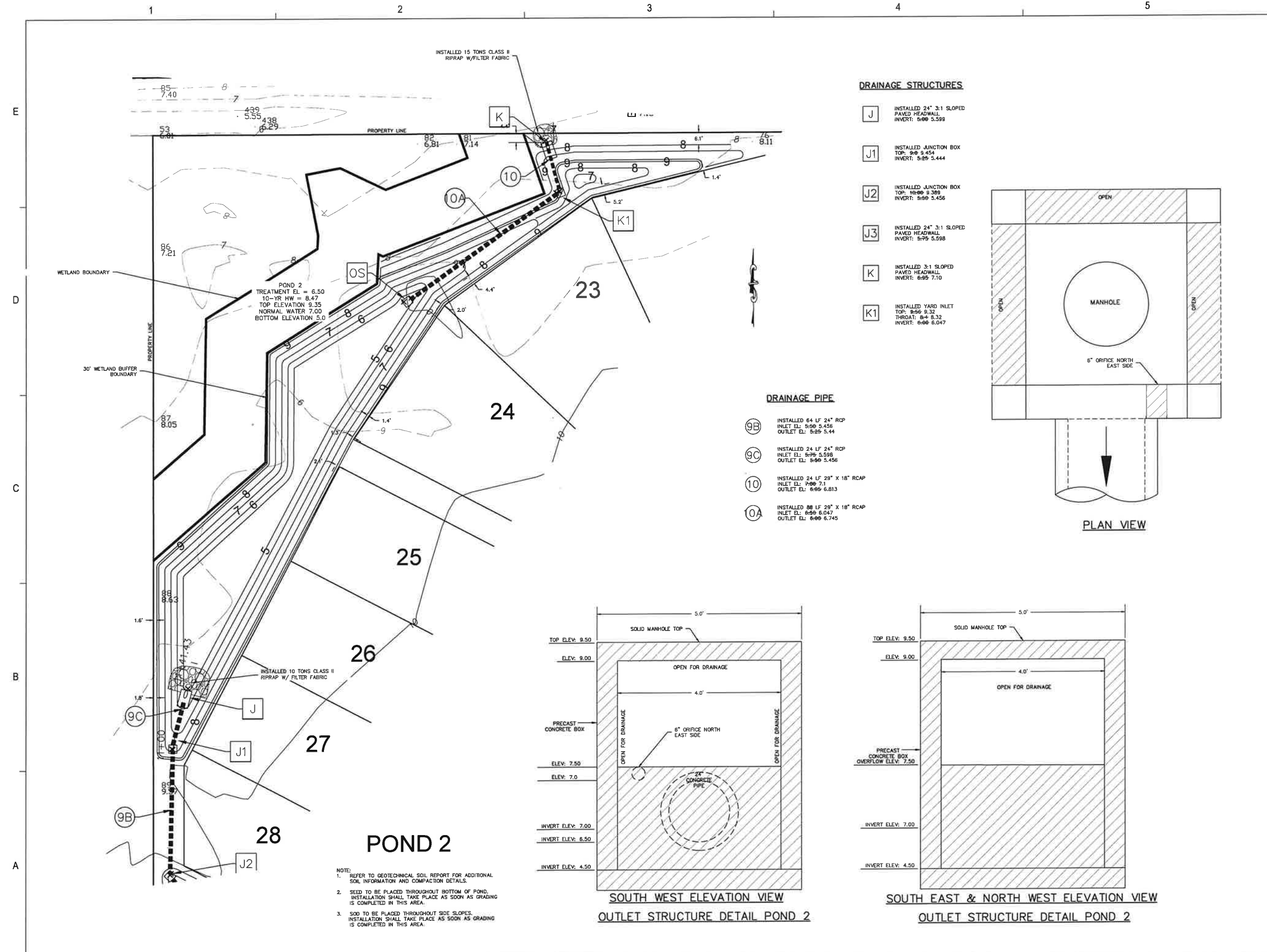
TITLE

**POND 2
PLAN & DETAILS**

PROJECT NO. 50115280

11A

SHEET NO.

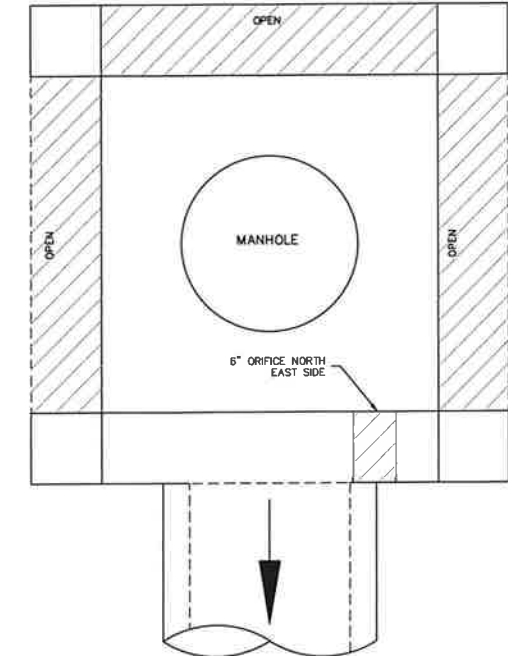


DRAINAGE STRUCTURES

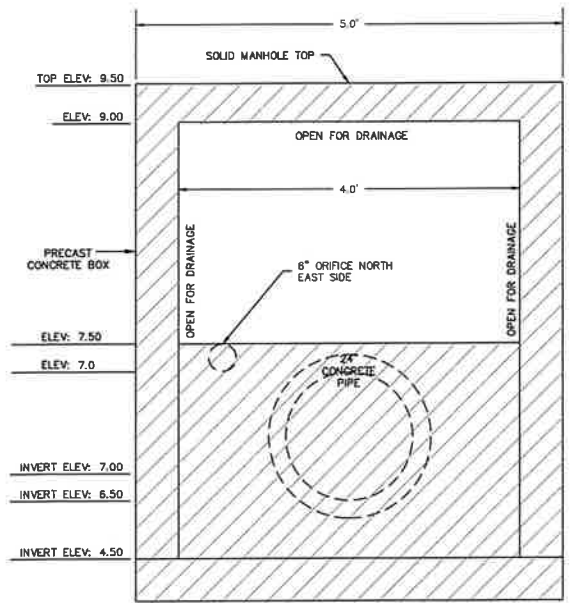
- J** INSTALLED 24" 3:1 SLOPED PAVED HEADWALL
INVERT: 5:06 5.599
- J1** INSTALLED JUNCTION BOX
TOP: 8:09 9.454
INVERT: 5:25 5.444
- J2** INSTALLED JUNCTION BOX
TOP: 10:06 9.389
INVERT: 5:56 5.456
- J3** INSTALLED 24" 3:1 SLOPED PAVED HEADWALL
INVERT: 5:25 5.598
- K** INSTALLED 3:1 SLOPED PAVED HEADWALL
INVERT: 6:05 7.10
- K1** INSTALLED YARD INLET
TOP: 8:56 9.32
THROAT: 8:4 8.32
INVERT: 6:06 6.047

DRAINAGE PIPE

- 9B** INSTALLED 64 LF 24" RCP
INLET EL: 5:50 5.456
OUTLET EL: 5:25 5.44
- 9C** INSTALLED 24 LF 24" RCP
INLET EL: 5:25 5.598
OUTLET EL: 5:00 5.456
- 10** INSTALLED 24 LF 29" X 18" RCP
INLET EL: 7:06 7.1
OUTLET EL: 6:05 6.813
- 10A** INSTALLED 88 LF 29" X 18" RCP
INLET EL: 6:06 6.047
OUTLET EL: 6:06 6.745

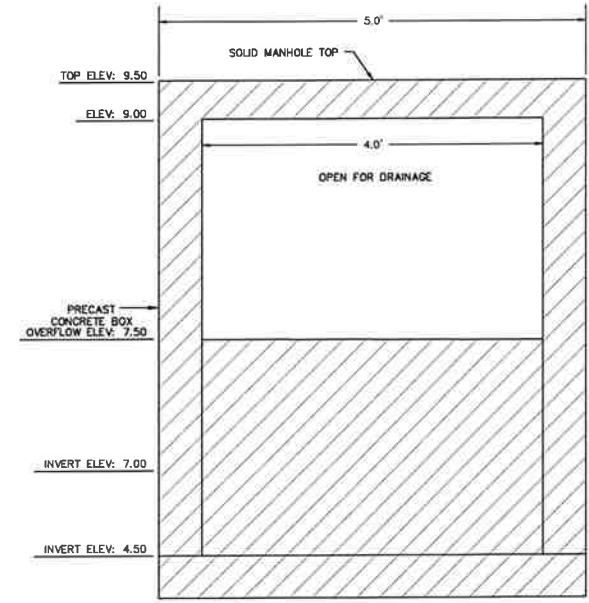


PLAN VIEW



SOUTH WEST ELEVATION VIEW

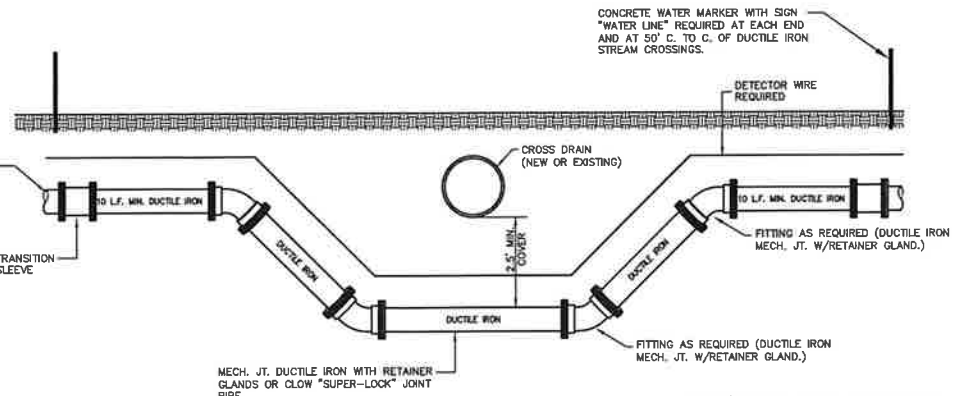
OUTLET STRUCTURE DETAIL POND 2



SOUTH EAST & NORTH WEST ELEVATION VIEW

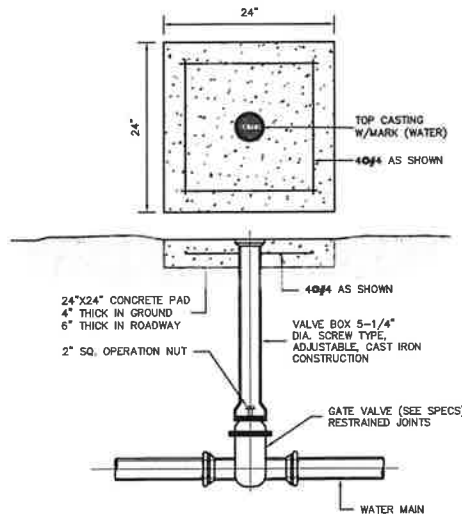
OUTLET STRUCTURE DETAIL POND 2

NOTE:
1. REFER TO GEOTECHNICAL SOIL REPORT FOR ADDITIONAL SOIL INFORMATION AND COMPACTION DETAILS.
2. SEED TO BE PLACED THROUGHOUT BOTTOM OF POND. INSTALLATION SHALL TAKE PLACE AS SOON AS GRADING IS COMPLETED IN THIS AREA.
3. SOO TO BE PLACED THROUGHOUT SIDE SLOPES. INSTALLATION SHALL TAKE PLACE AS SOON AS GRADING IS COMPLETED IN THIS AREA.

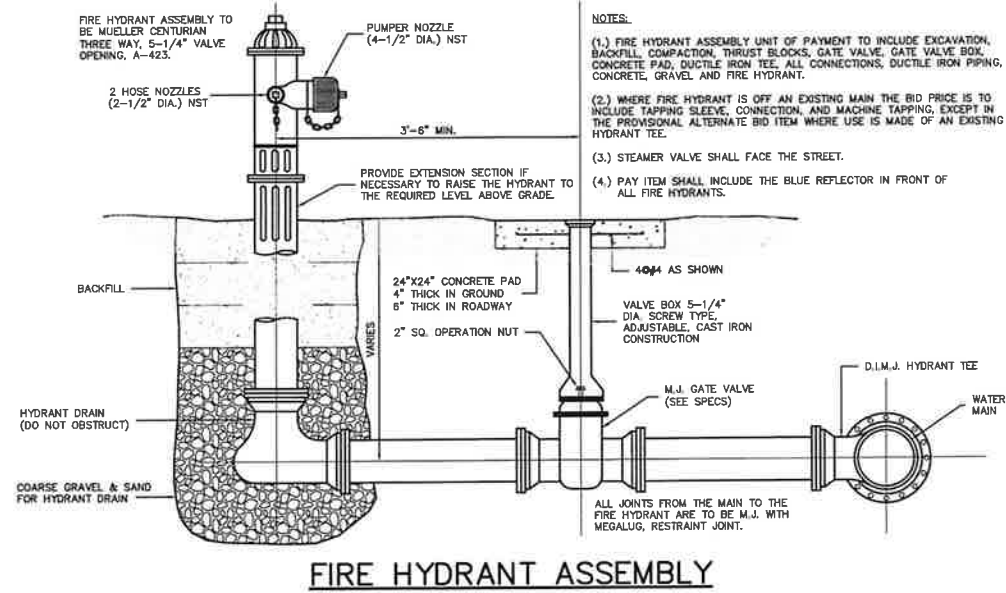


TYPICAL DRAINAGE PIPE CROSSING
NOT TO SCALE

THE 2.5" MIN. COVER SHALL BE FROM THE LOWEST ELEVATION OF THE DRAINAGE STRUCTURE INVERT. THIS ELEVATION SHALL BE MAINTAINED NO LESS THAN 10" EACH SIDE OF THE CROSS DRAIN REGARDLESS OF THE GROUND (ELEVATION WHICH MAY RESULT IN COVER DEPTHS SIGNIFICANTLY GREATER THAN THE 2.5" MIN.)

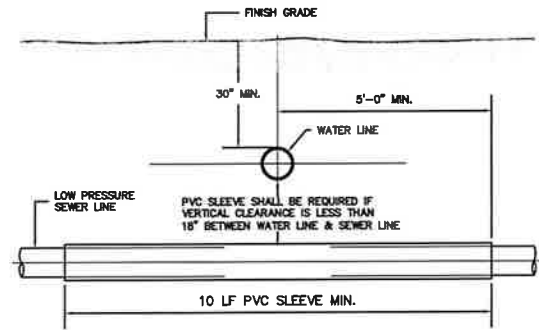


WATER GATE VALVE



FIRE HYDRANT ASSEMBLY

- NOTES:
- (1.) FIRE HYDRANT ASSEMBLY UNIT OF PAYMENT TO INCLUDE EXCAVATION, BACKFILL, COMPACTION, THRUST BLOCKS, GATE VALVE, GATE VALVE BOX, CONCRETE PAD, DUCTILE IRON TEE, ALL CONNECTIONS, DUCTILE IRON PIPING, CONCRETE, GRAVEL AND FIRE HYDRANT.
 - (2.) WHERE FIRE HYDRANT IS OFF AN EXISTING MAIN THE BID PRICE IS TO INCLUDE TAPPING SLEEVE, CONNECTION, AND MACHINE TAPPING, EXCEPT IN THE PROVISIONAL ALTERNATE BID ITEM WHERE USE IS MADE OF AN EXISTING HYDRANT TEE.
 - (3.) STEAMER VALVE SHALL FACE THE STREET.
 - (4.) PAY ITEM SHALL INCLUDE THE BLUE REFLECTOR IN FRONT OF ALL FIRE HYDRANTS.



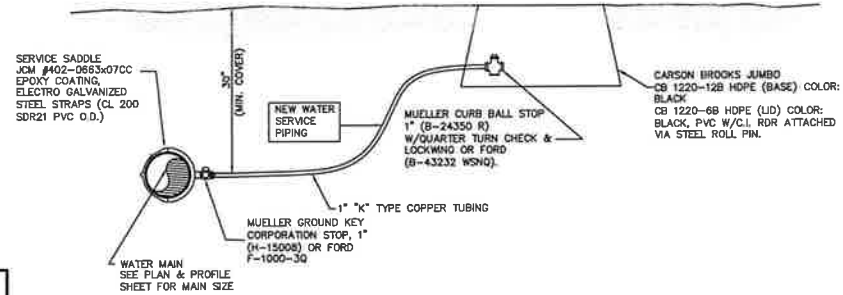
WATER LINE & SANITARY SEWER LINE VERTICAL CROSSING DETAIL

THE CONTRACTOR SHALL FOLLOW THE 10 STATE STANDARDS.

SIZE	THRUST BLOCK BEARING AREAS (SQ.FT.)					VERTICAL ANCHOR BLOCK VOLUMES		
	PLUGGED END OR TEE	90° BEND	45° BEND	22-1/2° BEND	11-1/4° BEND	45° VERT. BEND	22-1/2° VERT. BEND	GATE VALVE
2" DIA. PIPE LINE	1.0	1.0	1.0	1.0	1.0	9.3 CU. FT.	4 CU. FT.	0.5 CU. FT.
4" DIA. PIPE LINE	1.9	2.6	1.4	1.0	1.0	21.1 CU. FT.	9.8 CU. FT.	0.8 CU. FT.
6" DIA. PIPE LINE	3.6	5.0	2.7	1.4	1.0	50 CU. FT.	16 CU. FT.	1.0 CU. FT.
8" DIA. PIPE LINE	5.8	8.2	4.4	2.25	1.2			1.5 CU. FT.

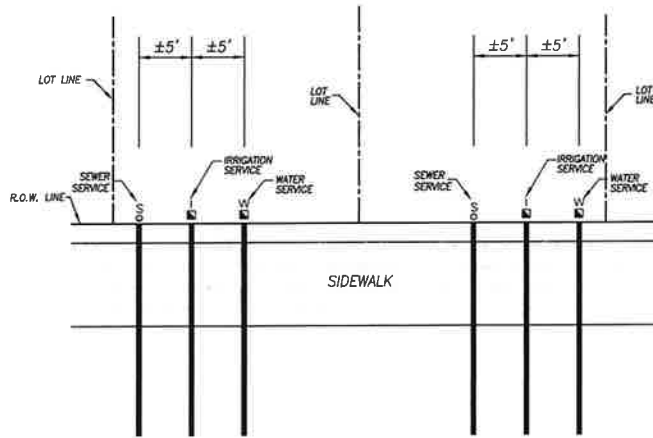
NOTE: THRUST BLOCK BEARING AREAS SHALL BE INCREASED IN POOR TRENCH CONDITIONS AS DIRECTED BY THE ENGINEER

DESIGN CRITERIA: TEST PRESSURE = 150 PSI
SOIL BEARING PRESSURE = 1 TON PER SQ. FT.



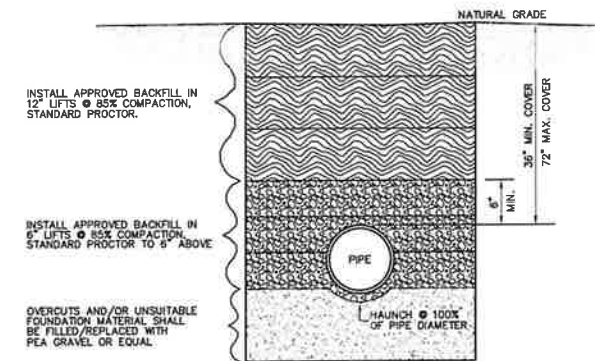
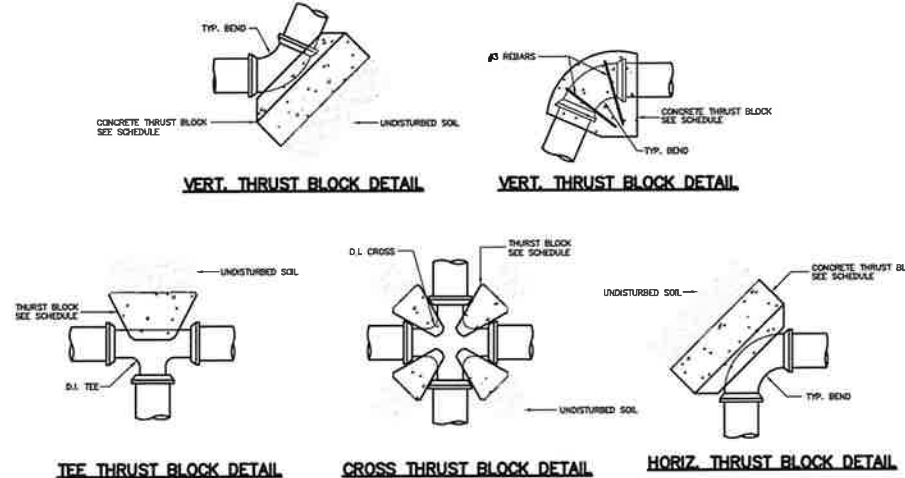
- NOTE:
- 1) DUCTILE IRON WATER LINES ARE TO BE DIRECT TAPPED AND EQUIPPED WITH 1" cc H-15008 MUELLER OR FORD F-1050-3q CORPORATION STOP.
 - 2) PRESET WATER SERVICES TO BE SECURED VIA PROMATIC #6 BARRELL LOCK COMPLETE WITH NYLON DUST CAP. *SERVICE FITTINGS ARE C.T.S. CONDUCTIVE COMPRESSION AS INDICATED.
 - 3) LOCATION OF EACH WATER SERVICE SHALL BE MARKED IN THE CONCRETE VALLEY GUTTER WITH THE LETTER "W".

TYPICAL NEW WATER SERVICE CONNECTION UTILITIES BOARD FOR THE CITY OF GULF SHORES



WATER SERVICE & SEWER LATERAL LOCATION PLAN

- NOTE:
1. SEE PLAN AND PROFILE SHEETS FOR LOCATION OF WATER SERVICES AND SANITARY SEWER LATERALS.
 2. LOCATION OF THE WATER SERVICES AND SANITARY SEWER LATERALS SHALL BE MARKED IN THE CONCRETE GUTTER WITH THE LETTER "W" FOR WATER SERVICE AND "I" FOR IRRIGATION SERVICES AND "S" FOR THE SEWER LATERALS.
 3. ALL UTILITY LINES SHALL BE A MINIMUM 30" UNDER SHOULDER & 48" UNDER PAVEMENT.



TYPICAL TRENCH DETAIL



AS BUILT 09/27/2021

SCALE
N/A

NO.	DESCRIPTION	DATE

REVISIONS

DRAWN BY _____ LMD

APPROVED BY _____ ANB

CHECKED BY _____ ANB

DATE _____ JULY 2020

TITLE
WATER DETAILS

PROJECT NO. _____ 50115280

THE RETREAT AT
BON SECOUR WEST
GC OF BON SECOUR, LLC
GULF SHORES, ALABAMA

SEAL



AS BUILT 09/27/2021

SCALE

N/A

NO.	DESCRIPTION	DATE

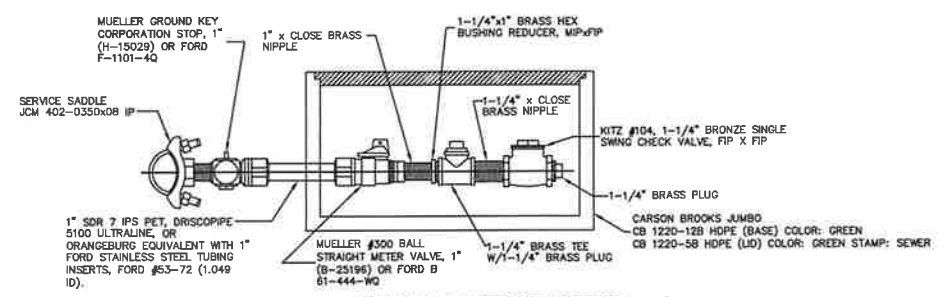
REVISIONS

DRAWN BY	LMD
APPROVED BY	ANB
CHECKED BY	ANB
DATE	JULY 2020

TITLE

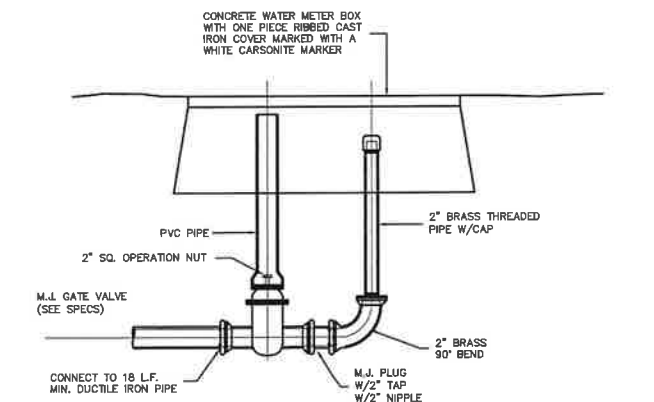
SEWER DETAILS

PROJECT NO. 50115280

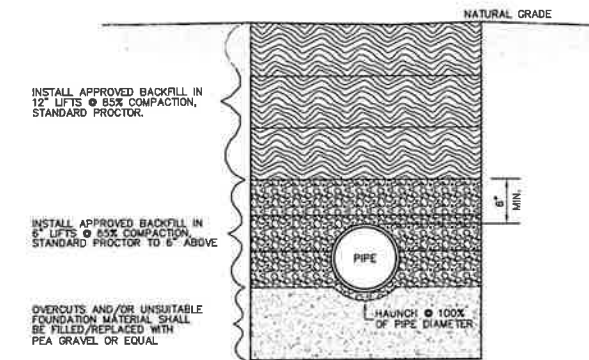


- NOTE: 1) DUCTILE IRON SEWER LINES ARE TO BE DIRECT TAPPED AND EQUIPPED WITH 1" IPS PE B-25196 MUELLER OR F-1101-4Q FORD CORPORATION STOP.
2) PRESET SEWER SERVICES TO BE SECURED VIA FROOMATIC #6 BARRELL LOCK COMPLETE WITH NYLON DUST CAP.
*SERVICE FITTINGS ARE I.P.S. PE CONDUCTIVE COMPRESSION AS INDICATED.

**LOW PRESSURE SEWER SERVICE
GULF SHORES UTILITIES**



FLUSHING STATION ASSEMBLY FOR SEWER AND WATER



TYPICAL TRENCH DETAIL