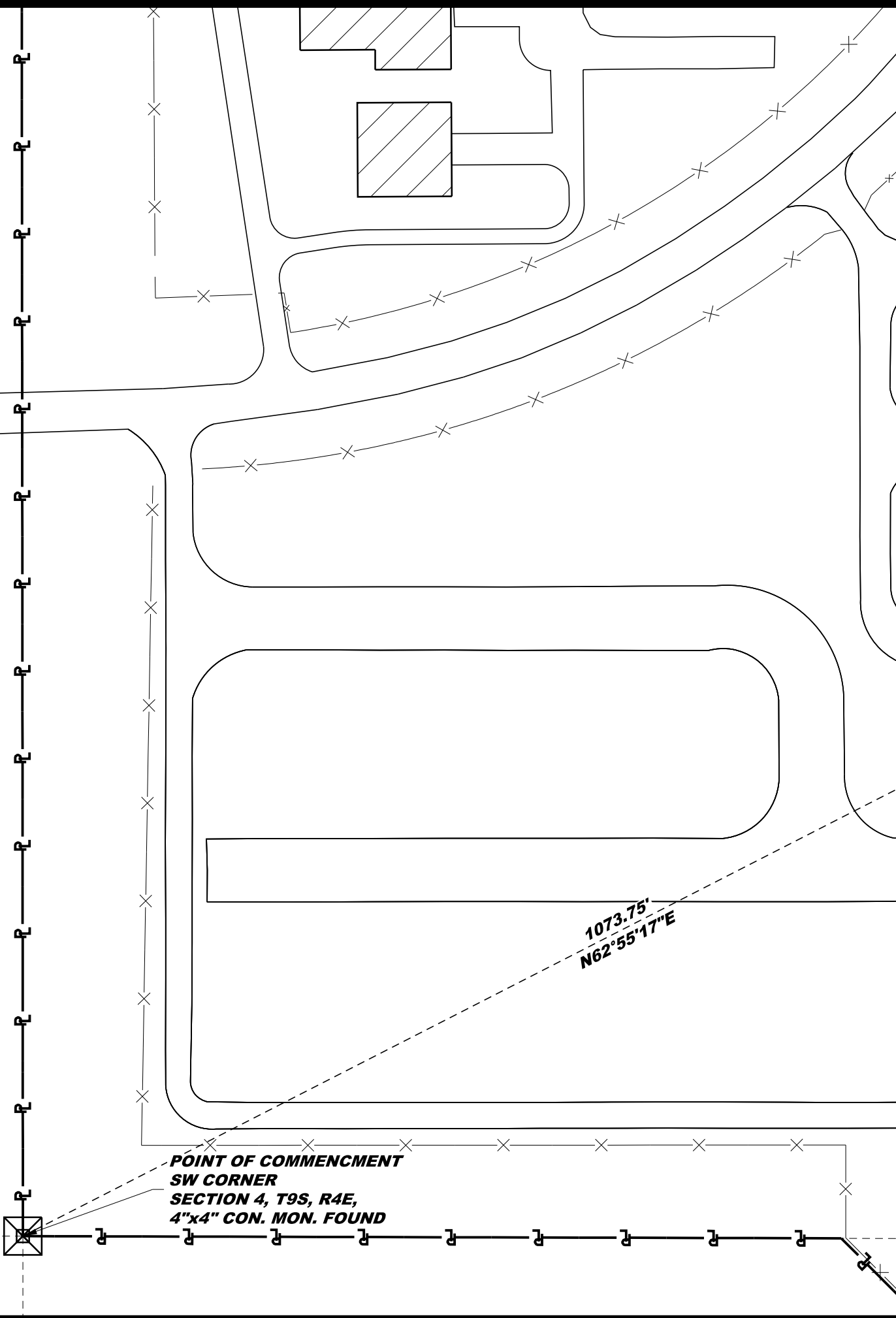


12.18'



**PROPOSED T-HANGAR**  
(56'x231')

**RADIUS = 52.00'**  
**ARC LENGTH = 23.83'**  
**CHORD BEARING = S76°51'01"E**  
**CHORD DISTANCE = 23.62'**

**±0.78 ACRES**

**POINT OF BEGINNING**

125.65'  
N00°01'13"E

247.99'  
S89°58'47"E

116.49'  
S00°01'13"W

55.00'

251.90'  
N89°58'47"W

**RADIUS = 50.00'**  
**ARC LENGTH = 19.60'**  
**CHORD BEARING = S78°47'28"W**  
**CHORD DISTANCE = 19.47'**

1073.75'  
N62°55'17"E

**POINT OF COMMENCEMENT**  
**SW CORNER**  
**SECTION 4, T9S, R4E,**  
**4"x4" CON. MON. FOUND**

**LEASE DESCRIPTION**

A PARCEL OF LAND LOCATED IN THE SOUTHWEST 1/4 OF SECTION 4, TOWNSHIP 9 SOUTH, RANGE 4 EAST, BALDWIN COUNTY, ALABAMA, MORE PARTICULARLY DESCRIBED AS FOLLOWS:  
 COMMENCE AT A CONCRETE MONUMENT ON THE EAST RIGHT OF WAY OF EAST 2ND STREET, AT THE SOUTHWEST CORNER OF SECTION 4, TOWNSHIP 9 SOUTH, RANGE 4 EAST, BALDWIN COUNTY, ALABAMA, AND PROCEED ON A BEARING OF N62°55'17"E, A DISTANCE OF 1,073.75 FEET TO THE POINT OF BEGINNING OF THIS LEASE, SAID POINT BEING ON THE EDGE OF THE ASPHALT TAXILANE; THENCE LEAVING SAID TAXILANE ON A BEARING OF N00°01'13"E, A DISTANCE OF 125.65 FEET TO A POINT ON THE EDGE OF THE ASPHALT TAXILANE; THENCE ALONG SAID TAXILANE EDGE S89°58'47"E, A DISTANCE OF 247.99 FEET; THENCE CONTINUING ALONG SAID TAXILANE EDGE ON A CURVE TO THE RIGHT HAVING A RADIUS OF 52.00 FEET, ARC LENGTH OF 23.83 FEET, CHORD BEARING OF S76°51'01"E AND CHORD DISTANCE OF 23.62 FEET; THENCE LEAVING SAID TAXILANE EDGE S00°01'13"W, A DISTANCE OF 116.49 FEET TO A POINT ON THE EDGE OF THE ASPHALT TAXILANE; THENCE CONTINUE ALONG SAID ASPHALT TAXILANE ON A CURVE TO THE RIGHT HAVING A RADIUS OF 50.00 FEET, ARC LENGTH OF 19.60 FEET, CHORD BEARING OF S78°47'28"W AND A CHORD DISTANCE OF 19.47 FEET; THENCE CONTINUE ALONG SAID ASPHALT TAXILANE EDGE N89°58'47"W, A DISTANCE OF 251.90 FEET BACK TO THE POINT OF BEGINNING. SAID LEASE CONTAINS 0.78 ACRES, MORE OR LESS.

DATE	CHK	DATE	DESCRIPTION
REC	UNC		LEASE DESCRIPTION